

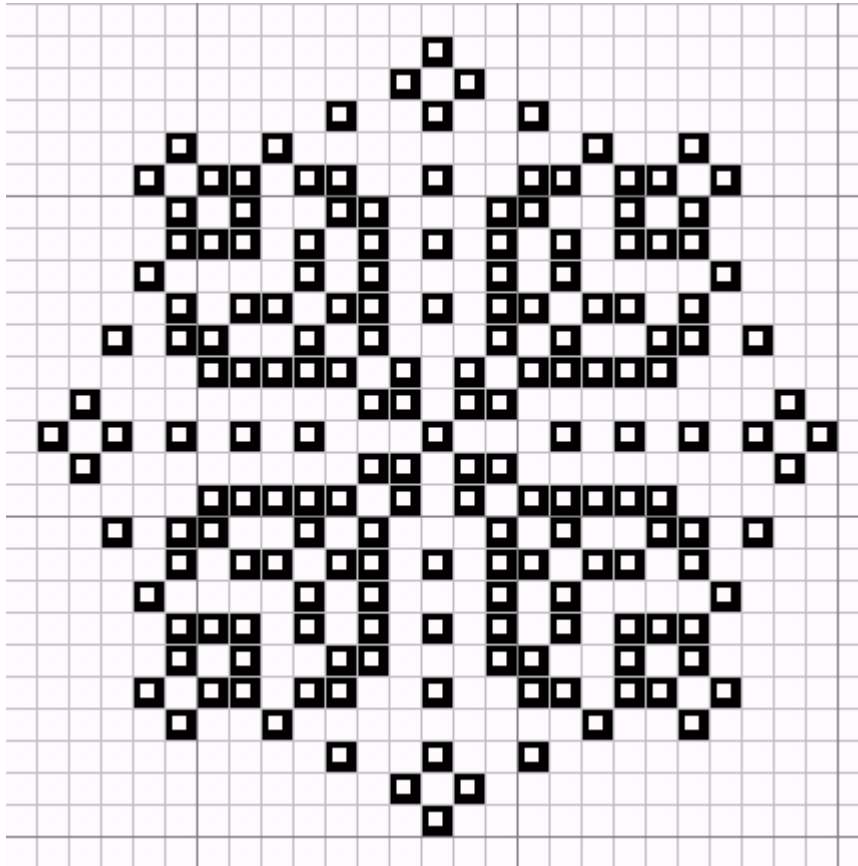
Complimentary Design

Ring o' Roses - simplified

This is a simplified example motif from a design series.

Size: 25x25 stitches

Fabric and fiber: stitcher's choice



Yours in stitches,

Lady Periphaeria

This is a complimentary design.

This design may not be kitted, sold nor shared in electronic (email, forums, websites, blogs etc.) or in printed form, or by any other means without written consent from the designer.