

This is a complimentary design by Periphaeria Designs.

# Miniature Tree of Life

As many of you know it has become my habit to design something for my mother for every Mother's Day and as I have been lately fascinated by trees of life I decided to design and stitch her a miniature tree of life.

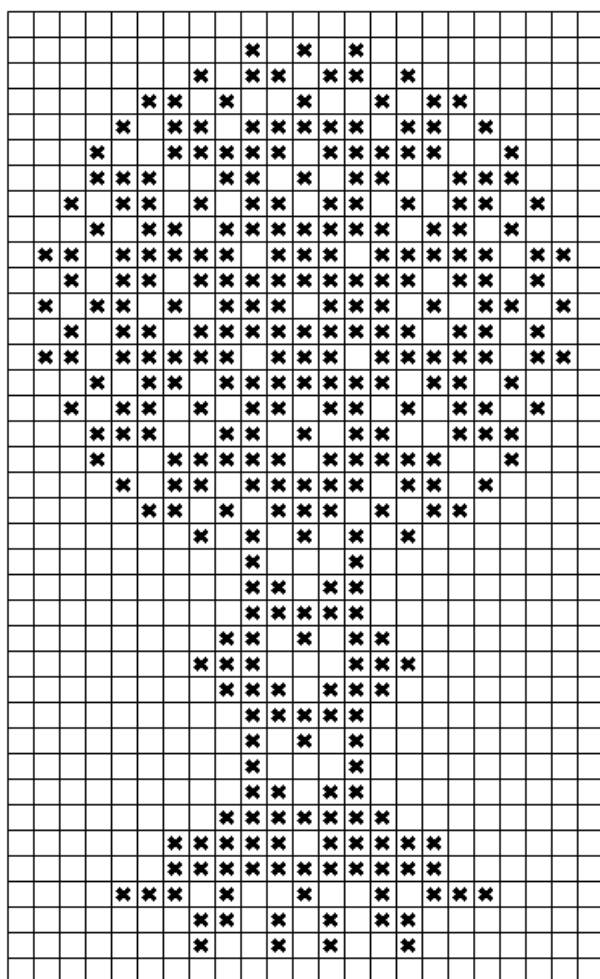
Tree of life represents mothers very well as they are our ultimate source of existence and nurture. Mothers grow life in many ways and their main fertilizer is, of course, love.

Hence tree of life with hearts on its trunk – and as my mom has three children there are three hearts.

This design is good for those extra lengths of floss you have left from your previous projects as it basically takes approximately 2-3 lengths (depending on your stitching method and aspect of "length") of six strand embroidery floss.

By stitching it over one thread on any evenweave this little tree would be a darling scissor fob.

I hope you enjoy the design!



Yours in stitches,

*Lady Periphaeria*

This design is published under the copyright of Periphaeria Designs.

This design, or any of its parts, may not be kitted, sold nor shared in any way, physically (printed or copied) or electronically (scanned, emailed, posted ANYWHERE), or stored in any retrieval system already in existence or yet to be created without written consent from the designer or her heirs.

You may make ONE copy of the design for your own use.

If you wish to use the design for anything other than your own personal use, such as selling your finished piece, you MUST obtain permission in writing from the designer ([periphaeria@gmail.com](mailto:periphaeria@gmail.com)).

Thank you for respecting copyrights and keeping the needlework industry alive!