

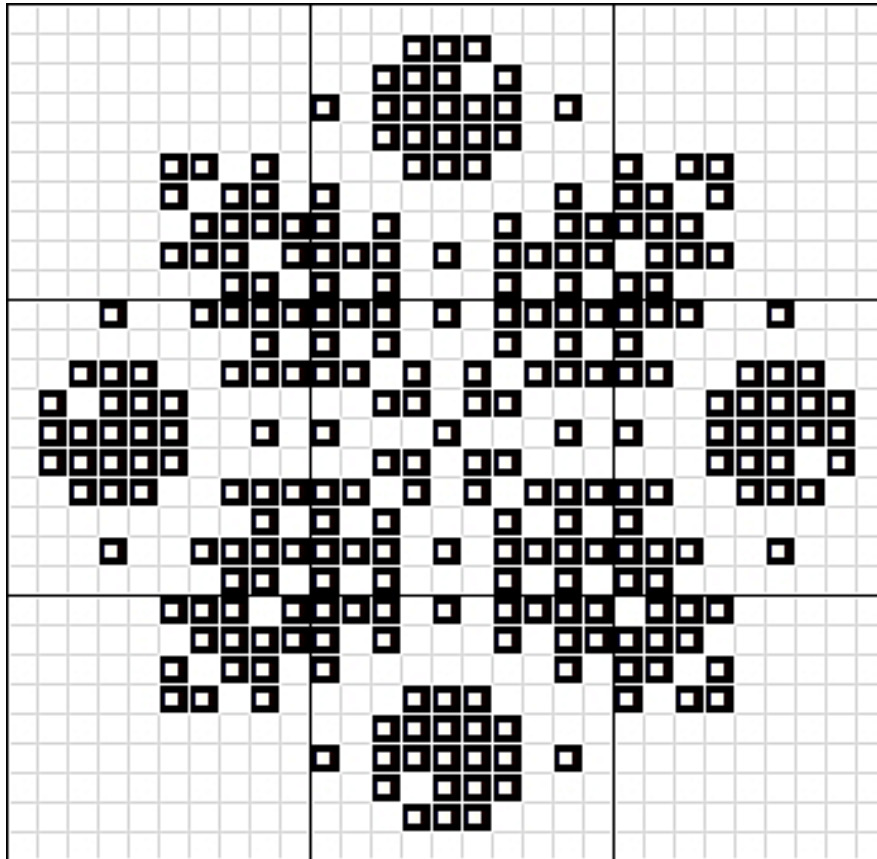
Complimentary Design

Leave the Berries Be

Even the model has been stitched with autumny colours (DMC 4130) this design is very suitable for most seasons: just change the colours to fit your liking/mood/season.

Size: 27x27 stitches

Fabric and fiber: stitcher's choice



Yours in stitches,

Lady Periphaeria

This is a complimentary design by Periphaeria Designs (<http://www.periphaeria.com>)

This design, or any of its parts, may not be kitted, sold nor shared in electronic (email, forums, websites, blogs etc.) or in printed form, or by any other means without written consent from the designer or her heirs.

You may make one copy of this design for your own personal use (to be used as a working copy).